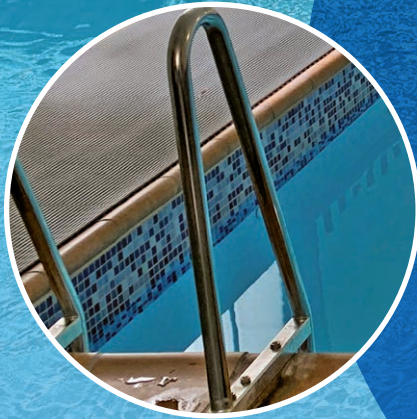




PVC Membrane

1.5mm Reinforced Membrane



A reinforced PVC membrane installed by Coombes Aquatics Ltd (CAL) is the ideal finishing solution for both new and existing swimming pools.

Custom-made on site to ensure a perfect fit to your swimming pool. Our **Elbe** range of reinforced PVC membranes are made in Germany to the highest quality standards. Due to its flexible nature, our reinforced PVC membrane is an ideal solution for refurbishing existing pools, giving them a new lease of life regardless of age.

- No more leaking pools
- No more painting
- Easily repairable
- Low maintenance
- Flexible product with high tolerance to seismic events

Certified Safety!

A guaranteed product for the lining of public swimming pools!

- Approved for public swimming pools as per KSW/KTW (plastics coming into contact with swimming/drinking water)
- CE certified
- Free from heavy metals, physiologically safe and certified as per EN71-3 (European standard for safety of toys)
- EN 15836-2 (European standard for swimming pool membranes)
- Quality management certified as per ISO 9001
- 10 year warranty certificate for watertightness (when properly installed and maintained)
- Waterline tiles and borders available
- Made in Germany
- All CAL installation staff have extensive training in the installation of Elbe PVC membrane installations to ensure a quality job every time

Trust House Lido Pool Refurbishment

"Magical with endless sparkling water", is how staff at Masterton's Lido Pool described the finished Arctic White Elbe membrane on their refurbished pool.



Masterton's outdoor recreational swimming pool is a large 25m x 25m pentagon style pool, with 8-lane speed slide. The Lido pool was suffering significant water loss, from a tired old pool tank, ineffective overflow channels and leaky slide.

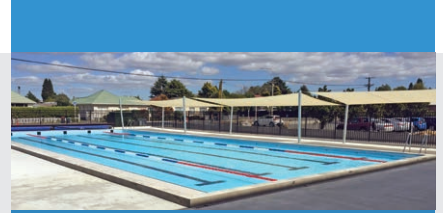
The installation of an Elbe PVC 1.5mm reinforced membrane in Arctic White has solved the leaky pool tank issue and returned the Lido pool tank back to its former glory. Trust House Recreation Centre and the Masterton District Council also have the added assurance of a 10-year water tightness warranty as a result of CAL's installation of the Arctic White Elbe PVC membrane. Stylish new overflow channels, two new balance tanks and recycled grating were also installed by the talented CAL Wellington team to maximise water efficiency and water reticulation.

The Perfect Residential Pool Solution

Not only do we membrane school and council pools but the Elbe PVC 1.5mm reinforced membrane is also the best solution for tired, cracked and damaged painted, plastered and fibreglass residential pools. Clients love the modern, fresh aesthetic created by the Arctic White Elbe PVC membrane. The new stainless-steel membrane compatible jets, skimmer plates and main drain complete the modern look.



- 10-year watertight warranty • Acrylic-topped surface for easy cleaning • Soft underfoot with felted underlay •
- Flexible seismic resilience • Other colours available on request •



Pool Refurbishments

Coombes Aquatics Ltd (formerly Ian Coombes Ltd) lead the way in swimming pool refurbishments. Following the Canterbury Earthquakes of 2010 and 2011, a large number of swimming pools in Canterbury were damaged.

We have now completed in excess of 40 school pool repair/refurbishment projects, including numerous residential pool repairs within the Canterbury region.

Our experience as a leading commercial aquatics specialist for over 40 years enables us to draw on a range of tried and tested methods for the refurbishment of your swimming pool.



Manufacturer and Supplier of...

COMMERCIAL AND RESIDENTIAL AQUATICS SPECIALISTS POOL REFURBISHMENT AND MEMBRANE INSTALLATION **POOL WATER DISINFECTION** PUMPING AND FILTRATION **POOL HEATING** THERMAL POOL COVERS **ROBOTIC POOL VACS** CHEMICALS AND TESTING EQUIPMENT **POOL DECK HARDWARE** SAUNA AND STEAM



Commercial and Residential Aquatic Specialists

Christchurch – 34 Acheron Drive, Riccarton, 03 348 2072

Wellington – cnr Meachen & Barnes Streets, Petone, 04 568 3521

Auckland – Unit A6, 269a Mt Smart Rd, Onehunga, 09 579 6500

E info@coombesaquatics.co.nz **W** coombesaquatics.co.nz



PROUD SUPPORTER:
WESTPAC RESCUE
HELICOPTER